



>> *deciding future benchmarks*



>> *deciding future benchmarks*

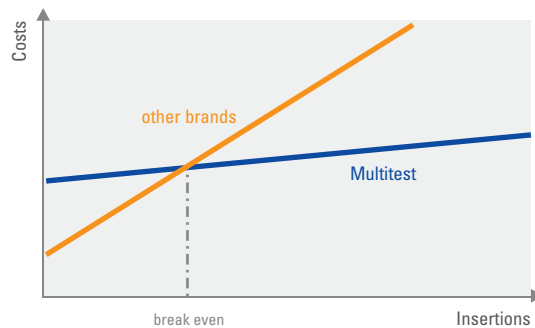
> **TEST SOCKETS FOR BEST COST OF TEST**

Test sockets are the electrical interface between tester and handler. Their functionality has a crucial impact on the OEE of the test cell. Multitest test sockets offer field proven best Cost of Test based on

- > extraordinary lifespan of more than one million insertions
- > optimized maintenance cycles minimize test cell downtimes
- > highest contacting yield with stable electrical behaviour

> **COST OF TEST CALCULATIONS**

Calculate your Cost of Test on www.multitest.com/CoT



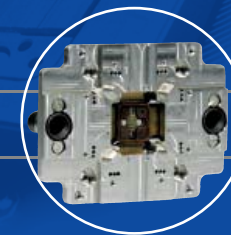
> **FOR MORE INFORMATION**

- please contact the Multitest sales team:

Multitest Germany
 Rosenheim, Tel. +49-8031-406-0
saleseurope@multitest.com

Multitest Singapore
 Tel. +65-6741-5977
salesasia@multitest.com

Multitest USA
 San Jose, Tel. +1-408-954-0290
salesusa@multitest.com



- visit www.multitest.com/sockets

- or see us at trade shows
www.multitest.com/shows

superior solutions for IC test development and volume production

>> www.multitest.com

by the technology leader for test sockets

Test sockets by Multitest

Superior solutions for IC test development and volume production

> COMPETENT PARTNER FOR IC TEST DEVELOPMENT

Proven expertise in developing innovative socket and handling solutions makes Multitest a perfect partner to design and deliver best final test socket applications.

> EXPERIENCED SUPPLIER FOR VOLUME TEST

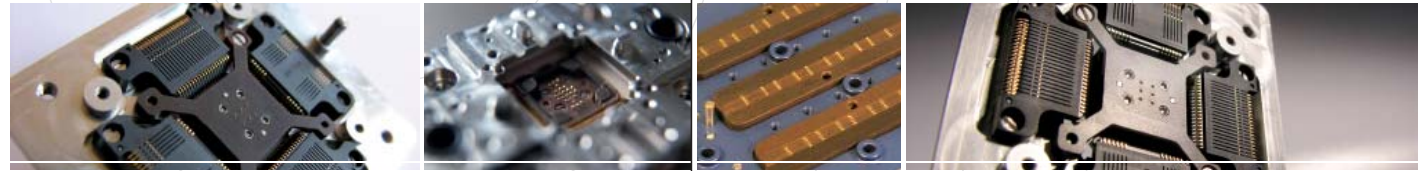
More than 25 years of experience with handler, dockings and sockets warrant highest contacting performance and best cost of test.

> WORLDWIDE SERVICE SUPPORT

Multitest's global presence ensures direct local support and eases the communication in multinational projects.



>> deciding future benchmarks



> BROAD PORTFOLIO OF APPLICATIONS AVAILABLE FOR THE COMPLETE TRI-TEMP RANGE

- > temperature: -60° to +160° C
- > for all packages including
 - smallest lead and pad sizes
 - lead pitches down to 0.3 mm
 - sensor / MEMS test
- > for all handler types and all established handler brands

> STATE-OF-THE-ART SOLUTIONS FOR CHALLENGING ELECTRICAL REQUIREMENTS

- > high frequency: up to 10 GHz
- > high power: e.g. 600 A @ 5 ms pulse
- > high voltage: dedicated contact spring architecture and leading-edge materials
- > magnetic screening: special design and material selection

> TECHNOLOGY LEADER FOR KELVIN APPLICATIONS

- > first-rate high power capability
- > available for smallest pads and pitches down to 0.4 mm
- > footprint allows incomplex and cost-efficient loadboard design

> EFFICIENT AND INNOVATIVE PARTNER FOR PIONEERING DEVELOPMENTS

- > consulting by the sockets application experts
- > best time-to-production with simulation of production environment in the quality lab

> TEST SOCKETS DEDICATED TO VOLUME TEST

- > more than 25 years of experience
- > thorough understanding of how to generate best yield at low cost
- > production proven performance
- > best reproducibility
- > lifespan > 1.0 million of insertions

> BEST RESULTS GUARANTEED BY LEADING-EDGE COATINGS

- > highest wear resistance
- > minimized solder build-up
- > proprietary coatings for Pb-free packages: Dura®, Forta® and MT Hard Gold

> SUPERIOR TEST CELL OVERALL EQUIPMENT EFFICIENCY

- > architecture ensures lowest consumption of wear-out parts
- > leading-edge coatings avoid solder build-up and wear
- > contact spring block principle allows fast and easy replacement
- > recommended toolsets and procedures for efficient preventive maintenance

Test sockets by Multitest